

# Magnetic End Effector

275 kg pneumatic

**An end effector that, when integrated in Quick-Lift System™, meets the highest standards of ergonomics, working environment, safety and efficiency.**

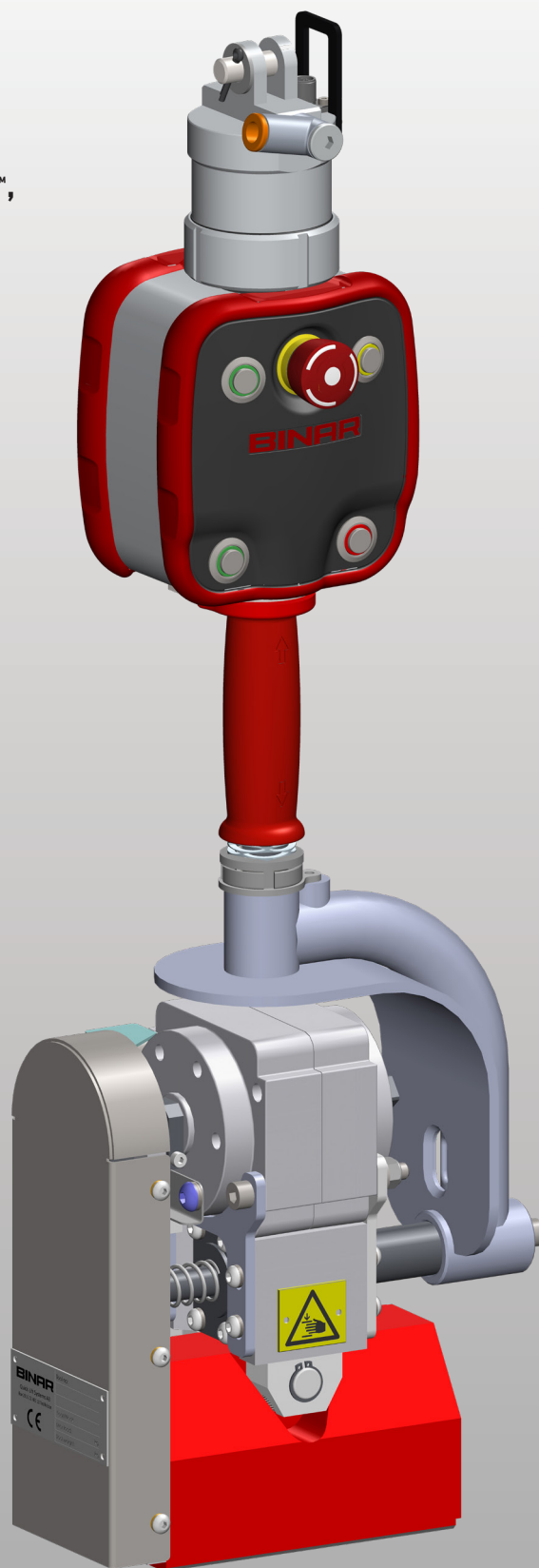
Unique integrated mechanical, electrical, pneumatic swivel enables continuous rotation of the end effector.

Easy to use, thanks to outstanding responsiveness, regardless of load weight.

Exceptional safety is achieved using our intelligent control systems.

High cost efficiency through high reliability and long durability.

A strong solution for quick and easy handling.



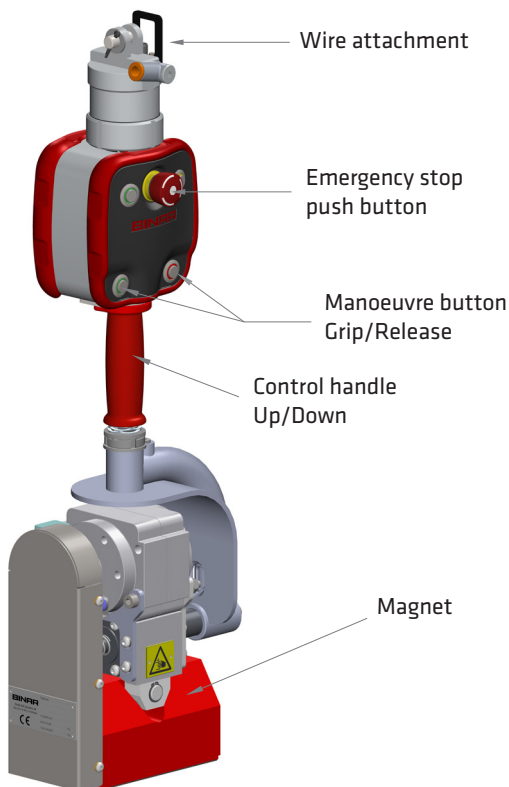
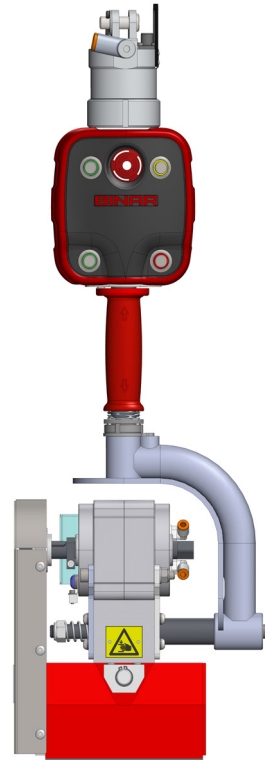
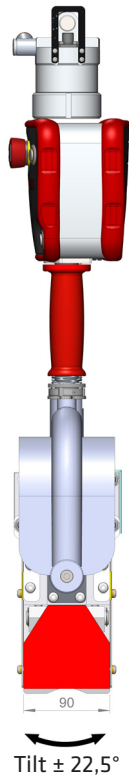
**BINAR**

*Improving your productivity*

# Magnetic End Effector

275 kg pneumatic

The figures are to be seen as indications and will vary depending on lifting objects.



## TECHNICAL DATA

<b>Lifting Capacity</b>	Maximum lifting capacity varies depending on lifting object shape <i>Note: The lifting capacity is reduced if the lifting objects center of gravity is eccentric</i>	
<b>Steel plate</b>	Thickness 25 mm	300 kg
	Thickness 20 mm	270 kg
	Thickness 15 mm	210 kg
	Thickness 10 mm	150 kg
	<i>Note: For steel plates &lt;25 mm magnetism can occur underneath the plate.</i>	
<b>Round steel</b>	ø 60-250 mm, Maximum length 1500 mm Maximum weight 135 kg	
<b>Temperature</b>	Maximum temperature on lifting object 50° C.	
<b>Product weight</b>	21 Kg / 46 lbs	
<b>Air supply</b>	Clean dry air, filtered, pressure 6,0-8,0 Bar	
<b>Safety</b>	3x safety has to be tested on each lifting object	

Binar Quick-Lift Systems AB disclaims responsibility for any errors or incomplete information in the published material and reserves the right to make changes.

**Binar Quick-Lift Systems AB**

Box 2014 • SE-461 11 TROLLHÄTTAN • Sweden  
telephone: +46 (0)520 47 40 00 • e-mail: info.quicklift@binar.se  
www.binarquicklift.com

**BINAR**  
Improving your productivity